



C230

User's Manual



R00

Trademarks

All brand and product names are trademarks or registered trademarks of their respective companies.

Disclaimer

Specifications and manuals are subject to change without notice. Mio Technology assumes no liability for damage incurred directly or indirectly from errors, omissions, or discrepancies between the device and the manuals.



Table of Contents

1	Getting Started	1
1.1	Understanding Hardware Components	1
	Front Components	1
	Back Components	2
	Top Components	2
	Bottom Components	3
	Left-side Components	3
1.2	Performing the Initial Start Up	4
1.3	Using Your Device in a Vehicle	5
	Using the Device Holder	5
	Connecting the Car Charger	5
1.4	Operating Basics	6
	Turning On and Off	6
	Navigating on the Screen	6
1.5	Inserting a SD/SDHC/MMC Card	7
2	Troubleshooting and Maintenance	9
2.1	Reset Your System	9
2.2	Troubleshooting	10
	Power Problems	10
	Screen Problems	10
	Connection Problems	10
	GPS Problems	11
2.3	Maintaining Your Device	11
3	Regulatory Information	13
3.1	Regulations Statements	13
	European Notice	13
3.2	Safety Precautions	14
	About Charging	14
	About the Charger	14
	About the Battery	14



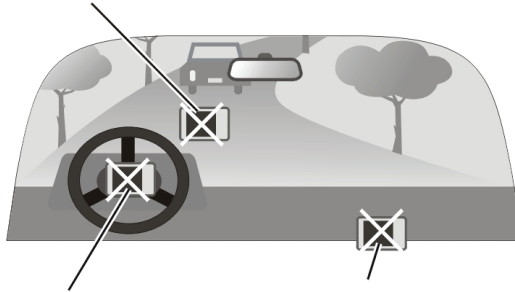
Warnings and Notices

- For your safety, do not operate the controls of the product while driving.
- Use this product with caution. The product is a navigation aid. It does not provide exact measurements of direction, distance, location or topography.
- The calculated route is for reference only. Always follow the posted traffic signs, speed limits and road restrictions.
- When you leave your car, do not leave your device on the dashboard in direct sunlight. This can cause the battery to overheat and malfunction.
- The Global Positioning System (GPS) is operated by the United States government, which is solely responsible for its performance. Any change to the GPS system can affect the accuracy of all GPS equipment world-wide.
- GPS satellite signals do not typically pass through solid materials such as brick, concrete, or lead-coated safety glass. When inside a tunnel, building or under-ground parking structures, GPS positioning will not typically be available.
- A minimum of 4 GPS satellite signals are typically needed to determine your GPS position. Signal reception can be affected by dense overhead structures, severe weather, geographic location or time of day.
- Other wireless devices in the vehicle may interfere with the reception of satellite signals and cause the reception to be unstable.
- Your GPS device is always tracking your location (you are the green arrow) when the navigation software is running and GPS signal is available. Your GPS device is not designed to broadcast its location; therefore it can not be tracked by anyone else.

- A device holder is needed when using the device in a car. Be sure to place the device in an appropriate place, so as not to obstruct the driver's view, or deployment of airbags.

Do not mount where the driver's field of vision is blocked.

Do not place on the dashboard unsecured.



Do not mount in front of airbag panels.

Do not mount in front of an airbag field of deployment.

1

Getting Started

1.1 Understanding Hardware Components

NOTE: Depending upon the specific model purchased, the color of your device may not exactly match the device shown in this manual.

Front Components



Ref	Component	Description
①	Touch Screen	Displays the output of your device. Tap the screen with your stylus to select menu commands or enter information.
②	Charge Indicator	Flashes bright amber to indicate that the battery is charging, and turns green when the battery is fully charged.

Back Components



Ref	Component	Description
❶	ON/OFF Switch	The main power/battery cut off switch.
❷	Holder Connector	Connects to the holder.
❸	Speaker	Sends out music, sounds and voice.

Top Components



Ref	Component	Description
❶	Power Button	Turns on and off the device.

Bottom Components



Ref	Component	Description
①	SD/MMC/SDHC(Class 2, Class 4, Class 6) Slot	Accepts an SD (Secure Digital) or SDHC (Secure Digital High Capacity) or MMC (MultiMedia Card) card for accessing data such as map data.
②	Mini-USB Connector	Connects to the USB cable or in-car power cable.

Left-side Components



Ref	Component	Description
①	External Antenna Connector	This connector (under rubber dust cover) allows use of an optional external GPS antenna with magnetic mount, which may be positioned on top of the car for better GPS signal reception in areas with poor reception.

1.2 Performing the Initial Start Up

- 1 Slide the ON/OFF switch to the ON position.

| CAUTION: Always leave the ON/OFF switch in the ON position for normal operation



- 2 Your device turns on.
- 3 Tap and hold the centre of the target. When the target moves to another position, tap and hold the centre of the new target. Repeat each time to complete the calibration process.
- 4 The “Change Language” screen appears. Tap the left/right arrow button to select the desired language. Then, tap the button.
- 5 The “Date&Time” screen appears. Tap the appropriate arrow button to select the time zone, date, and time. Then, tap the button.
- 6 MioMap program starts. You can now use your device.

1.3 Using Your Device in a Vehicle

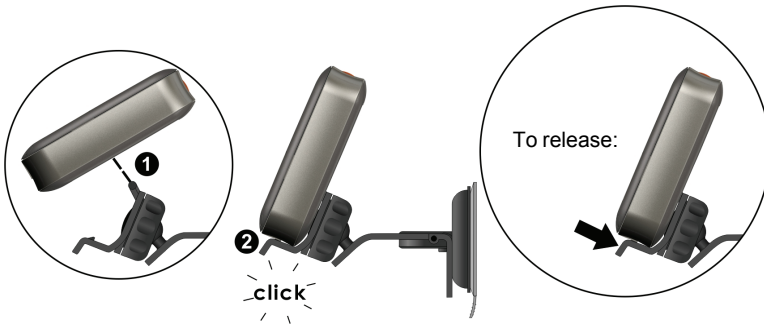
Using the Device Holder

CAUTION:

- Select an appropriate location for the device holder. Never place the holder where the driver's field of vision is blocked.
- If the car's windshield is tinted with a reflective coating, an external antenna (optional) may be needed to route the antenna to the top of the car through a window. When closing the car window, be careful not to pinch the antenna cable

Use the device holder to fix your device in a vehicle. Make sure that the GPS antenna has a clear view of the sky.

Note: To remove your device from the holder, slightly push the tab of the holder to release it.

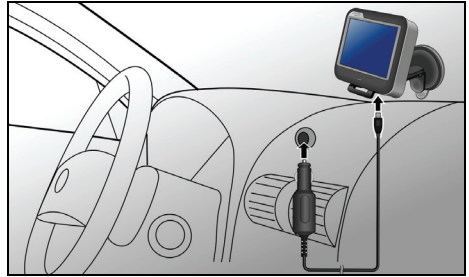


Connecting the Car Charger

The car charger supplies power to your device when you are using the device in a car.

CAUTION: To protect your device against sudden surges in current, connect the car charger only after the car engine has been started.

1. Connect one end of the car charger to the power connector of your device.
2. Connect the other end to the cigarette lighter in the car to power and charge your device. The indicator on the car charger lights in green to indicate that power is being supplied to your device.



CAUTION: For optimal performance of the lithium battery, take note of the following:

- Do not charge the battery where the temperature is high (e.g. in direct sunlight).
- There is no need to fully discharge the battery before charging. You can charge the battery before it is discharged.
- If you will not use the product for a long period of time, be sure to fully charge the battery at least once every two weeks. Over discharge of the battery can affect the charging performance.

NOTE: Your device can also be charged when it is connected to a desktop computer via the USB cable. If you intend to charge your device in this way, turn off your device so that it takes less time to charge the battery.

1.4 Operating Basics

Turning On and Off

For normal operation, turn off the device by briefly pressing the power button. The device enters a suspended state.



When you next briefly press the power button, the system resumes.

Navigating on the Screen

To operate your device, touch the screen with your fingertip. You can perform the following actions:

- **Tap**
Touch the screen once with your fingertip to open items or select onscreen buttons or options.
- **Drag**
Hold your fingertip on the screen and drag up/down/left/right or across the screen.
- **Tap and hold**
Tap and hold your fingertip until an action is complete, or a result or menu is shown.



1.5 Inserting a SD/SDHC/MMC Card

Your device has a slot where you can insert an optional SD/SDHC (Class 2, Class 4, Class 6) /MMC storage card.

To use a card, insert it into the slot, with the connector pointing to the slot and its label facing the front of the device.

To remove a card, first make sure that no application is accessing the card, and then slightly push the top edge of the card to release it and pull it out of the slot.

| NOTE: Make sure that no foreign objects enter the slot.



2

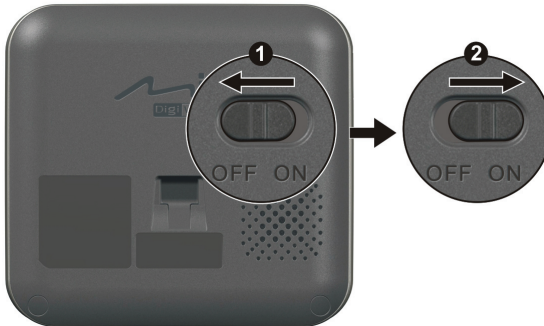
Troubleshooting and Maintenance

2.1 Reset Your System

Occasionally, you may need to reset your device. For example, you should reset your system when it stops responding; or appears to be “frozen” or “locked up.”

You can use the following steps to perform a “hard reset.”

- 1 Disconnect all cables, including the charger, from your device.
- 2 Slide the ON/OFF switch to the OFF position.
- 3 Wait for 1 minute and then slide the switch back to the ON position.



2.2 Troubleshooting

NOTE: If you encounter a problem you cannot solve, contact an authorized service center for assistance.

Power Problems

Power does not turn on when using battery power

- The remaining battery power may be too low to run your device. Charge the battery.

Screen Problems

Screen responds slowly

- Make sure that your device is not running out of battery power. If the problem still exists, reset your system.

Screen freezes

- Reset your system.

Screen is hard to read

- Make sure that the backlight of the display is on.
- Move to a location with more light.

Inaccurate response to taps

- Reset your system.

Connection Problems

Cable Connection Problems

- Make sure that your device and your computer are both turned on before trying to establish a connection.

- Make sure that the cable is securely plugged into the USB port on your computer and on the device. Connect the USB cable directly to your computer—do not run the cable through a USB hub.
- Reset your device before connecting the cable. Always disconnect your device before you restart your computer.

GPS Problems

- When there are no valid signals available, consider the following:
- Make sure that the GPS antenna has a clear view of the sky.
- Note that the GPS reception can be affected by:
 - ✓ Bad weather
 - ✓ Dense overhead obstacles (e.g. trees and tall buildings)
 - ✓ Other wireless device in the car
 - ✓ Reflective car window tint

2.3 Maintaining Your Device

Taking good care of your device will ensure trouble-free operation and reduce the risk of damage to your device.

- Keep your device away from excessive moisture and extreme temperatures.
- Avoid exposing your device to direct sunlight or strong ultraviolet light for extended periods of time.
- Do not place anything on top of your device or drop objects on your device.
- Do not drop your device or subject it to severe shock.
- Do not subject your device to sudden and severe temperature changes. This could cause moisture condensation inside the unit, which could damage your device. In the event of moisture condensation, allow the device to dry out completely before use.
- Take care not to sit on the device. We advise not to carry the device in one's back pocket for that reason.

- The screen surface can easily be scratched. Avoid touching it with sharp objects. Non-adhesive generic screen protectors designed specifically for use on portable devices with LCD panels may be used to help protect the screen from minor scratches.
- Never clean your device with it powered on. Use a soft, lint-free cloth to wipe the screen and the exterior of your device.
- Do not use paper towels to clean the screen.
- Never attempt to disassemble, repair or make any modifications to your device. Disassembly, modification or any attempt at repair could cause damage to your device and even bodily injury or property damage and will void any warranty.
- Do not store or carry flammable liquids, gases or explosive materials in the same compartment as your device, its parts or accessories.

3

Regulatory Information

NOTE: Marking labels located on the exterior of your device indicate the regulations that your model complies with. Please check the marking labels on your device and refer to the corresponding statements in this chapter. Some notices apply to specific models only.

3.1 Regulations Statements

European Notice

Products with the CE marking comply with Radio & Telecommunication Terminal Equipment Directive (R&TTE) (1999/5/EEC), the Electromagnetic Compatibility Directive (89/336/EEC) and the Low Voltage Directive (73/23/EEC) – as amended by Directive 93/68/ECC - issued by the Commission of the European Community.

Compliance with these directives implies conformity to the following European Standards:

EN301489-1: Electronic compatibility and Radio spectrum Matters (ERM), ElectroMagnetic Compatibility (EMC) standard for radio equipment and services; Part 1: Common technical requirements

EN301489-3: Electronic compatibility and Radio spectrum Matters (ERM), ElectroMagnetic Compatibility (EMC) standard for radio equipment and services; Part 3: Specific conditions for Short-Range Devices (SRD) operating on frequencies between 9 kHz and 40 GHz

EN55022: Radio disturbance characteristics

EN55024: Immunity characteristics

EN6100-3-2: Limits for harmonic current emissions

EN6100-3-3: Limitation of voltage fluctuation and flicker in low-voltage supply system

EN60950 / IEC 60950: Product Safety

The manufacturer cannot be held responsible for modifications made by the User and the consequences thereof, which may alter the conformity of the product with the CE Marking.

3.2 Safety Precautions

- Prolonged listening of music in maximum volume can damage the ears.
- The use of headphones other than those recommended/supplied can cause hearing impairment due to excessive sound pressure.

About Charging

- Use only the charger (UDID, G12PCL-535-B031) supplied with your device. Use of another type of charger will result in malfunction and/or danger.
- This product is intended to be supplied by a LISTED Power Unit marked with “LPS”, “Limited Power Source” and output rated + 5 V dc / 1.0 A”.
- Use a specified battery in the equipment.

About the Charger

- Do not use the charger in a high moisture environment. Never touch the charger when your hands or feet are wet.
- Allow adequate ventilation around the charger when using it to operate the device or charge the battery. Do not cover the charger with paper or other objects that will reduce cooling. Do not use the charger while it is inside a carrying case.
- Connect the charger to a proper power source. The voltage requirements are found on the product case and/or packaging.
- Do not use the charger if the cord becomes damaged.
- Do not attempt to service the unit. There are no serviceable parts inside. Replace the unit if it is damaged or exposed to excess moisture.

About the Battery

- Use a specified charger approved by the manufacturer.

CAUTION: This unit contains a non-replaceable internal Lithium Ion battery. The battery can burst or explode, releasing hazardous chemicals. To reduce the risk of fire or burns, do not disassemble, crush, puncture, or dispose of in fire or water.

- Important instructions (for service personnel only)
 - ✓ **Caution:** Risk of explosion if battery is replaced by an incorrect type. Dispose of used batteries according to the instructions.
 - ✓ Replace only with the same or equivalent type recommended by the manufacturer.
 - ✓ The battery must be recycled or disposed of properly.
 - ✓ Use the battery only in the specified equipment.